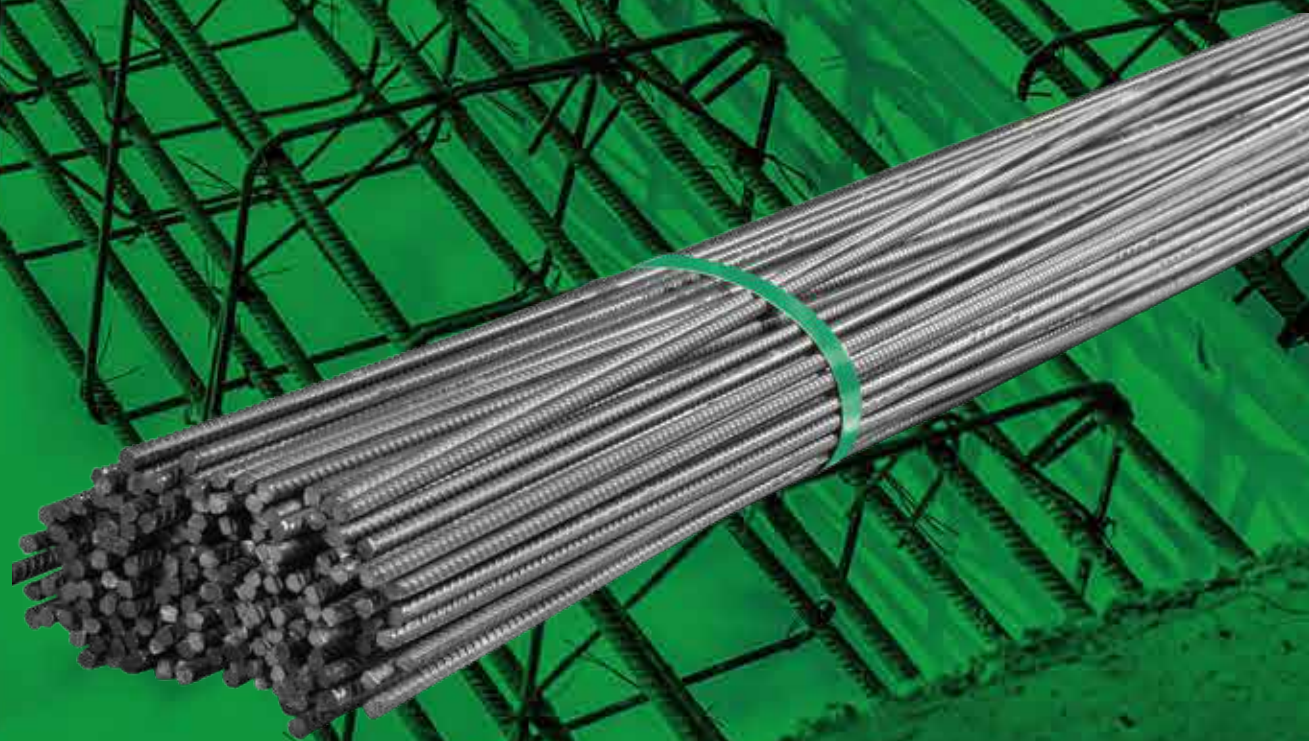


# REBAR



**VILLACERO**

TODO EN ACERO

# REBAR

On request, the corrugated rod with special chemical and physical characteristics is offered for different levels of weldability and ductility.

## CHARACTERISTICS

- As Mexican Standard NMX B-457 grade 42, BS 4449 grade 460, ASTM-A-706 grade 60.
- CAN / CSA - G30.18-M92 grade 400W, among others.
- Corrugated Rod grade-42 complies with the Mexican standard NMX-C-407, as well as with the American standard ASTM-A-615 / A-615M in its grades 40 and 60.
- Length in 12 m.
- At the request of the customer can be supplied in special cuts.
- Weight of bundle: 1,800 - 2,000 Kg.

## USES AND APPLICATIONS

- Construction sectors such as columns, profiles, floors, fences, etc.

# TECHNICAL INFORMATION

## Nominal dimensions

DESIGNATION NO.	CALIBER		NOMINAL WEIGHT		AREA OF THE TRANSVERSAL SECTION	NOMINAL PERIMETER	MAX SPREADING OF THE CORRUGATION	MIN HEIGHT OF THE CORRUGATION	MAXIMUM RIB
	in	mm	kg/m	lb/pc	mm <sup>2</sup>	mm	mm	mm	mm
3	3/8	9.5	0.560	0.376	71	29.8	6.7	0.4	3.6
4	1/2	12.7	0.994	0.668	127	39.9	8.9	0.5	4.9
5	5/8	15.9	1.552	1.043	198	50.0	11.1	0.7	6.1
6	3/4	19.1	2.235	1.502	285	60.0	13.3	1.0	7.3
8	1	25.4	3.973	2.670	507	79.8	17.8	1.3	9.7
10	1 1/4	31.7	6.225	4.303	794	99.9	32.3	1.6	12.2
12	1 1/2	38.1	8.938	5.988	1,140	119.7	26.7	1.9	14.6

## Mechanical properties

NORM		NMX-C-407 **		NMX-B-457
PROPERTIES		GRADE 30	GRADE 42	GRADE 42
TENSILE STRENGTH N/mm2 (kg/mm2) MIN		490 (50)*	618 (63)*	618 (63)*
YIELD POINT kg/cm2 (lb/in2) MIN		294 (30)	412 (42)	412-540 (42-55)
ELONGATION IN 200 MM. MIN	REBAR N°	IN %		
	3, 4 y 5	11	9	14
	6	12	9	14
	7 y 8	—	8	12
	9, 10, 11 y 12	—	7	12
BENDING PROPERTIES	REBAR N°	DIAMETER OF THE MANDREL FOR BENDING TESTS AT 180°		
	3, 4 Y 5	3.5 D	3 D	3.5 D
	6	5 D	4 D	5 D
	7 Y 8	---	4 D	5 D
	9 Y 10	---	6 D	7 D
11 Y 12	---	6 D	8 D	

\* The relationship between the tensile strength and the yield strength should not be less than 1.25.

\*\* Equivalent to American Standard ASTM A 615.

a) At the request of the customer can be supplied in special cuts.

b) Weight of bundle: 1,800 - 2,000 Kg.

D = Nominal Diameter of the Test sample



PROCESSES CERTIFIED  
UNDER ISO 9001: 2015 STANDARD  
FM 35435



### CUSTOMER CONTACT

Local e-mail: info@villacero.com

Mexico Line: 800 220 4040

Monterrey Line: 818 989 8989

International e-mail: expo@villacero.com

International line: +52 818 151 5353